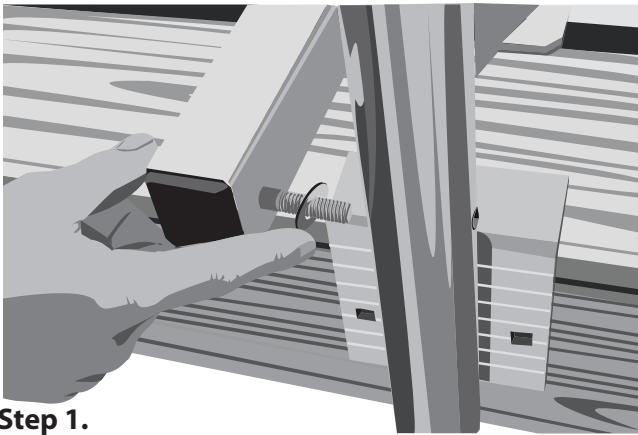


Vertical Ladder Instructions for Wood Docks

9078W



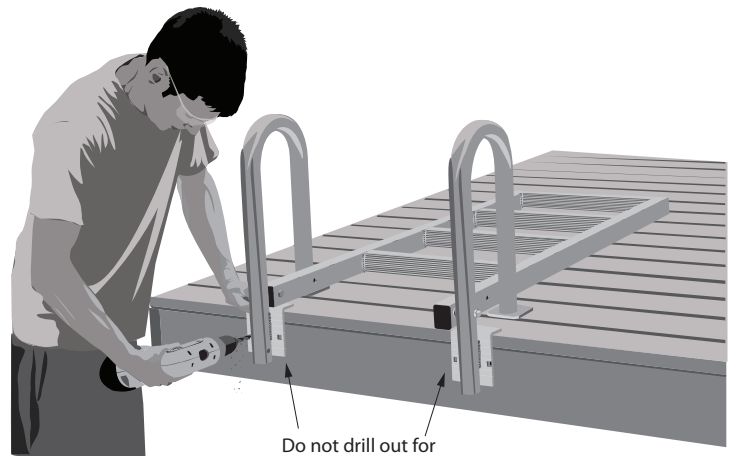
Step 1.

The hole for the ladder bolts is off center so lay the ladder on the deck with the bolt holes closest to the top.

If you don't do this, the ladder will not swing down all the way.

Connect the ladder to the handles with two hex bolts and the Nylock Jam Nut from the bolt kit bag. Place one washer between each handle and the ladder allowing space for the ladder to swing between the handles.

Place washers on the ends as well.



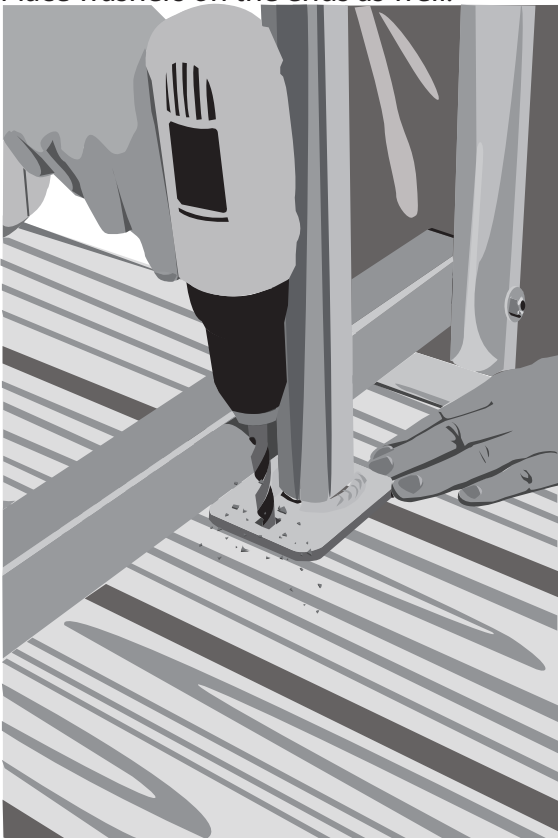
Do not drill out for these inner holes.

Step 2.

Once the handles are bolted to the ladder with two bolts, use the ladder as a template to drill holes for mounting it.

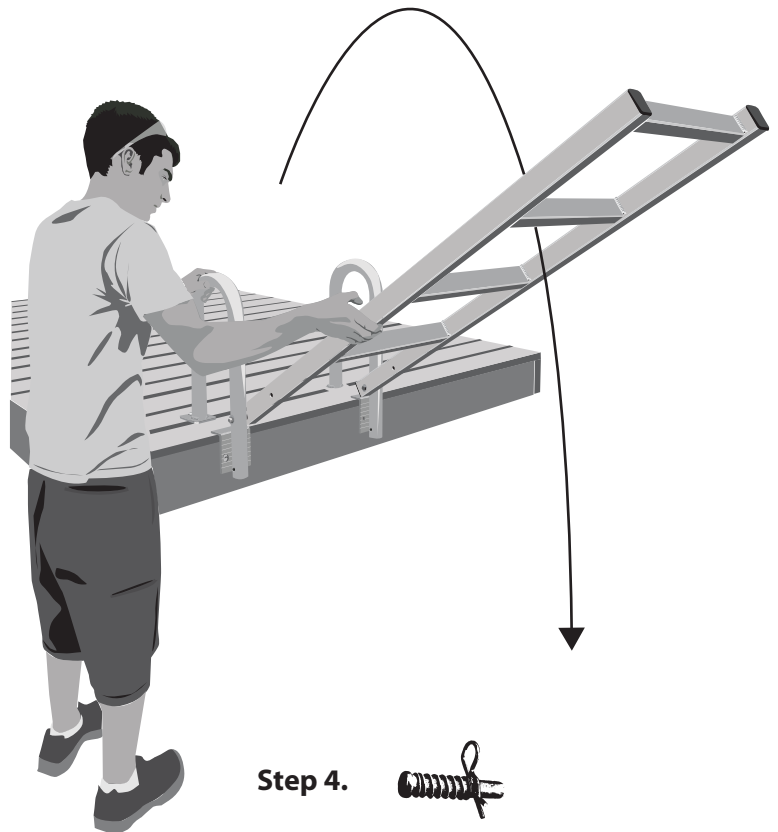
Drill the two outside holes and bolt the ladder to the side of the dock.

The extra holes are standard on all handles so each handle can be a left or a right.



Step 3.

Drill down through the deck where the base of the ladder handle sits. Use a backer board beneath the decking to reinforce this connection point. It is good to distribute the upward force of the bolt to three deckboards with your backer board.



Step 4.



Retract the "Ladder Spring Pins" to get the ladder in the down position. You can offset the pin in the hole to hold the spring while swinging the ladder down. Release the pin from the offset position to keep the ladder from moving while in the down position.