

J-Brackets

When Sections are joined together, the J-Brackets are used in pairs to connect sections end to end or side to side.

1. Take The J-Bracket and stick the curved portion into the track as shown to the left.

2. Push down on the J-Bracket until you hear it click into place.

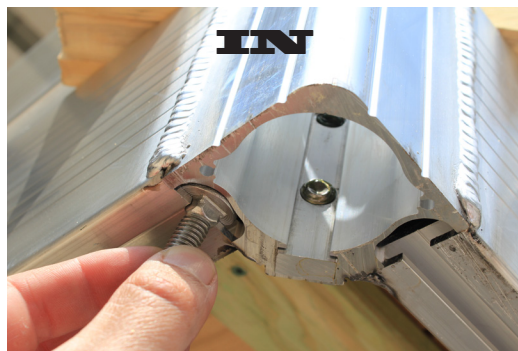
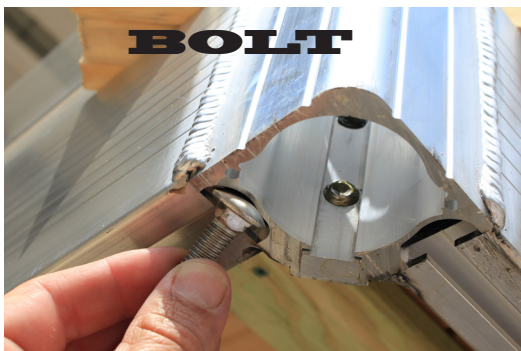
Pairs of these will provide a shelf to support an additional section.

The first dock section might have four legs while the second could have two legs on the outer end and shares legs with the section it is attached to.

3. The small ridge on the back side will make a click noise when it secures to the groove on the under side of the dock frame.

The J-Bracket can be removed by twisting a regular screw driver behind this ridge and pushing the up on the outer edge of the J-Bracket.

If the J-Bracket is bent out of shape from removing it, simply tap the thin ridge slightly closed for a tight fit. The louder the snap, the tighter the fit.



4. The Section being added will rest on the J-Brackets and each J-Bracket will receive a carriage bolt and nut in one of the two slotted holes in The J-Bracket.

The outer portion of the Dock Frame being added will need to be held up with dock legs.